



COMPANY PROFILE

ISWARA MUSTIKA EKAWIRA

**AUTHORIZED
DISTRIBUTOR**

Sika®



Established in 2014 and based in Jakarta, Iswara Mustika Ekawira is the largest SIKA Authorized Distributor for construction sealant (facade, interior, civil & special adhesive) in Indonesia. Our specialty lies in Polyurethane (PU), Silicone, Silane-Terminated Polymer (STP) and Acrylic product, supporting vast network of customers represents private and government building main contractor, aluminium facade and interior fabricator, developer and manufacturer throughout Indonesia.

Recognizing the progress our company has made in a few short years and backed by the excellent technical experience, skills, integrity, dedication and commitment of our team, we believe Iswara Mustika Ekawira is strongly positioned to be your trusted partner in the future.

VISION

To be a leading company for supplying SIKA Facades, Fenestration and Insulating products to a wide-range of construction and services sectors in Indonesia

MISION

We are committed to implement a long term relationship with our customers, based on safety, quality, timely service and an anticipation of their needs by providing the highest level of professionalism.

HEAD OFFICE

Rungkut Harapan G-39, Rungkut, Surabaya, Jawa Timur 60297

BRANCH OFFICE

Ruko De Mansion Blok EF No. 18, Alam Sutera, Tangerang, Banten 15144

(+62) 31 8782 728
(+62) 31 8782 726

(+62) 21 3005 2707
(+62) 21 3005 2708





Sika AG is a specialty chemical company for building and motor vehicle supplies, headquartered in Baar, Switzerland. It has a leading market position in both the building sector and the automotive industry. Business activities focus on the seven target markets.

Sika was founded in 1910 when Kaspar Winkler laid the cornerstone for the firm. Winkler worked himself up from poverty to become a successful entrepreneur, and by the 1920s he was already engaged in founding subsidiaries abroad. Today the company has more than 17,000 employees, subsidiaries in 98 countries, and an annual sales turnover of CHF 5.75 billion (2016).

Besides the brand Sika, more than 600 product brands are in use including Sikaflex, SikaTack, Sika ViscoCrete, SikaBond, Sikafloor, Sika CarboDur, Sikagard, Sika MaxTack, Sikaplan, Sikament, Sikadur, SikaLastic, SikaRoof MTC, Sika Unitherm and Sika Sarnafil. Sika AG is the legal entity for the holding company, which includes the Sika organisations worldwide, Sika Technology AG (Research and Development) and Sika Services AG (Corporate functions supporting all organizations worldwide).

In 1987, PT. Sika Nusa Pratama was established to improve the level of local service for the Indonesian construction industry. With a local production facility in Cileungsi - Bogor, Sika became the dominant player in the Indonesian construction market, recognizing substantial growth throughout 1990 and entering the 21st century.

In 2003 we changed the name to PT. Sika Indonesia and now we have consolidated our Sales and Administration office in Cileungsi - Bogor.

Sika Indonesia is committed to excellence in innovative solutions and continues to adapt products and systems to the needs of customers and users. Sika is a global and local company (Glo-kal), which places the needs of local customers at the center of its business activities. Sika Indonesia's products and systems are supported by a comprehensive service package, specifically designed for local market needs.

Sika Indonesia is the first construction chemical company in Indonesia to receive ISO 9001: 2002 accreditation. In 2004, we received a certificate of the latest version of ISO 9001: 2000. In November 2005, we successfully completed the implementation of the environmental management system and received the ISO 14001: 2004 certificate.

Sika, has been active in Indonesia since 1960 by providing a range of products for various prestigious projects such as Indocement Tunggal Perkasa Cement Plant in Cibinong, Paiton Steam Power Plant in Probolinggo, Balerang Bridge in Batam, Singkarak Hydroelectric Power Plant in Sumatra, and many others





SIKA FIRE RATED PRODUCT

SIKASIL-670 Fire
SIKASIL-665 SL

SIKA UNIVERSAL BONDING

SIKA MAX TACK ULTRA
SIKAFLEX 11-FC

SIKA FACADE SEALANT

SIKAHYFLEX-140
SIKAHYFLEX-160
SIKAHYFLEX-250 FACADE
SIKASIL WS-305
SIKAHYFLEX-105
SIKAHYFLEX 100
SIKAHYFLEX CONNECTION
SIKAHYFLEX-220 WINDOW

FIRE RATED

**AUTHORIZED
DISTRIBUTOR**

Sika®

Sikasil®-670 Fire

1-part, elastic fire-rated silicone joint sealant



**UP TO 4 HOURS
FIRE RESISTANCE**

Use
Fire resistant sealing of exterior and interior movement and connection joints in walls and floors

Key Advantages & Benefits
Movement capability of 25% (ISO 11803:25 LNW)

Certificates available
EN 1366-4
ETAG 026
EN 13501-1
EN 13501-2
UL 2019
BS 476-20
UL 2019

Sikacryl®-620 Fire

1-part, intumescent fire-rated acrylic sealant



**UP TO 5 HOURS
FIRE RESISTANCE**

Use
Fire resistant sealing of interior connection joints anchoring of openings and penetrations around cables and pipes

Key Advantages & Benefits
Intumescent property, swell expanding under heat, ensures tightness of penetrations in case of fire
Easy to apply and overpaintable

Certificates available
EN 1366-4
ETAG 026
EN 13501-1
EN 13501-2
UL 2019
BS 476-20

Sika Boom®-400 Fire

1-part, high yield, a robust polyurethane combi foam which can be applied either by application gun or attached nozzle



**UP TO 5 HOURS
FIRE RESISTANCE**

Use
Fire resistant sealing of linear wall joints and for installing fire doors or windows

Key Advantages & Benefits
Suitable for application at lower temperatures (<5°C)
Very good thermal insulation
Effective sound dampening for doors

Certificates available
EN 1366-4
EN 13501-2

Sika® Backer Rod Fire

Universal fire resistant backer rod for movement and connection joints



**UP TO 4 HOURS
FIRE RESISTANCE**

System
To protect the backer rod against dust, moisture and mechanical influences apply certified Sikaflex® or Sikaflex® sealants on top

Use
Fire resistant sealing of movement and connection joints in walls and floors

Key Advantages & Benefits
Adapts perfectly to all irregularities of the joints. Dimensional variations of the joint width are compensated by stretching and compressing
Can be combined with certified Sikaflex® and Sikaflex® sealants
Fast application thanks to roll length of 20 meters

Certificates available
EN 1366-4
EN 13501-2

Sika® RV-585

Fire resistant backing material for movement and connection joints



**UP TO 4 HOURS
FIRE RESISTANCE**

System
Sika® RV-585 has to be protected against dust, moisture and mechanical influences with Sikaflex®-250 Facade sealant on top

Use
Fire resistant sealing of movement and connection joints in walls and floors

Key Advantages & Benefits
Adapts to all irregularities of the joints. Dimensional variations of the joint width are compensated by stretching and compressing
Tested with Sikaflex®-250

Certificates available
EN 1366-4
EN 13501-2

SEALING & JOINING
SIKA FIRE PROTECTION SOLUTIONS

FIRE RESISTANCE OF JOINTS WITH Sikasil®-670 Fire AND Sikacryl®-620 Fire

FIRE RESISTANCE OF Sikasil®-670 Fire AND Sikacryl®-620 Fire TESTED ACCORDING TO EN 1366-4 AND CLASSIFIED ACCORDING TO EN 13501-2

Product	Substrate	Joint type	Minimum substrate thickness	Joint width	Fire resistance (min)	Fire resistance (max)	Fire resistance (min)	Fire resistance (max)	Fire resistance (min)	Fire resistance (max)
Sikasil®-670 Fire	Concrete/Concrete	Wall	100mm	12-20mm	2,1	2,1	2,1	2,1	2,1	2,1
		Wall	100mm	12-20mm	2,1	2,1	2,1	2,1	2,1	2,1
		Wall	100mm	12-20mm	2,1	2,1	2,1	2,1	2,1	2,1
		Wall	100mm	12-20mm	2,1	2,1	2,1	2,1	2,1	2,1
	Concrete/Steel	Wall	100mm	12-20mm	2,1	2,1	2,1	2,1	2,1	2,1
		Wall	100mm	12-20mm	2,1	2,1	2,1	2,1	2,1	2,1
		Wall	100mm	12-20mm	2,1	2,1	2,1	2,1	2,1	2,1
		Wall	100mm	12-20mm	2,1	2,1	2,1	2,1	2,1	2,1
	Concrete/Concrete	Floor	100mm	12-20mm	2,1	2,1	2,1	2,1	2,1	2,1
		Floor	100mm	12-20mm	2,1	2,1	2,1	2,1	2,1	2,1
		Floor	100mm	12-20mm	2,1	2,1	2,1	2,1	2,1	2,1
		Floor	100mm	12-20mm	2,1	2,1	2,1	2,1	2,1	2,1
Sikacryl®-620 Fire	Concrete/Concrete	Wall	100mm	12-20mm	2,1	2,1	2,1	2,1	2,1	2,1
		Wall	100mm	12-20mm	2,1	2,1	2,1	2,1	2,1	2,1
		Wall	100mm	12-20mm	2,1	2,1	2,1	2,1	2,1	2,1
		Wall	100mm	12-20mm	2,1	2,1	2,1	2,1	2,1	2,1
	Concrete/Steel	Wall	100mm	12-20mm	2,1	2,1	2,1	2,1	2,1	2,1
		Wall	100mm	12-20mm	2,1	2,1	2,1	2,1	2,1	2,1
		Wall	100mm	12-20mm	2,1	2,1	2,1	2,1	2,1	2,1
		Wall	100mm	12-20mm	2,1	2,1	2,1	2,1	2,1	2,1
	Concrete/Concrete	Floor	100mm	12-20mm	2,1	2,1	2,1	2,1	2,1	2,1
		Floor	100mm	12-20mm	2,1	2,1	2,1	2,1	2,1	2,1
		Floor	100mm	12-20mm	2,1	2,1	2,1	2,1	2,1	2,1
		Floor	100mm	12-20mm	2,1	2,1	2,1	2,1	2,1	2,1

Concrete, concrete and aerated concrete with a density > 1100 kg/m³

FIRE RESISTANCE OF JOINTS WITH Sika Boom®-400 Fire

FIRE RESISTANCE OF Sika Boom®-400 Fire TESTED ACCORDING TO EN 1366-4 AND CLASSIFIED ACCORDING TO EN 13501-2

Product	Substrate	Joint type	Minimum substrate thickness	Joint width	Fire resistance (min)	Fire resistance (max)	Fire resistance (min)	Fire resistance (max)	Fire resistance (min)	Fire resistance (max)
Sika Boom®-400 Fire	Concrete/Concrete	Wall	200mm	12-20mm	2,1	2,1	2,1	2,1	2,1	2,1
		Wall	200mm	12-20mm	2,1	2,1	2,1	2,1	2,1	2,1
		Wall	200mm	12-20mm	2,1	2,1	2,1	2,1	2,1	2,1
		Wall	200mm	12-20mm	2,1	2,1	2,1	2,1	2,1	2,1
	Concrete/Steel	Wall	200mm	12-20mm	2,1	2,1	2,1	2,1	2,1	2,1
		Wall	200mm	12-20mm	2,1	2,1	2,1	2,1	2,1	2,1
		Wall	200mm	12-20mm	2,1	2,1	2,1	2,1	2,1	2,1
		Wall	200mm	12-20mm	2,1	2,1	2,1	2,1	2,1	2,1
	Concrete/Concrete	Floor	200mm	12-20mm	2,1	2,1	2,1	2,1	2,1	2,1
		Floor	200mm	12-20mm	2,1	2,1	2,1	2,1	2,1	2,1
		Floor	200mm	12-20mm	2,1	2,1	2,1	2,1	2,1	2,1
		Floor	200mm	12-20mm	2,1	2,1	2,1	2,1	2,1	2,1
Sika Boom®-400 Fire	Concrete/Concrete	Wall	200mm	12-20mm	2,1	2,1	2,1	2,1	2,1	2,1
		Wall	200mm	12-20mm	2,1	2,1	2,1	2,1	2,1	2,1
		Wall	200mm	12-20mm	2,1	2,1	2,1	2,1	2,1	2,1
		Wall	200mm	12-20mm	2,1	2,1	2,1	2,1	2,1	2,1
	Concrete/Steel	Wall	200mm	12-20mm	2,1	2,1	2,1	2,1	2,1	2,1
		Wall	200mm	12-20mm	2,1	2,1	2,1	2,1	2,1	2,1
		Wall	200mm	12-20mm	2,1	2,1	2,1	2,1	2,1	2,1
		Wall	200mm	12-20mm	2,1	2,1	2,1	2,1	2,1	2,1
	Concrete/Concrete	Floor	200mm	12-20mm	2,1	2,1	2,1	2,1	2,1	2,1
		Floor	200mm	12-20mm	2,1	2,1	2,1	2,1	2,1	2,1
		Floor	200mm	12-20mm	2,1	2,1	2,1	2,1	2,1	2,1
		Floor	200mm	12-20mm	2,1	2,1	2,1	2,1	2,1	2,1

Concrete, concrete and aerated concrete with a density > 1100 kg/m³



FIRE PROTECTION
A New Method of
Passive Fire Protection

BUILDING TRUST

Sika®

5h
Fire rated up to 5 hours - High yield
rated according to BS 476 part 20



SIKA FIRE RATED PRODUCT

SIKASIL-670 Fire
SIKASIL-665 SL

SIKA UNIVERSAL BONDING

SIKA MAX TACK ULTRA
SIKAFLEX 11-FC

SIKA FACADE SEALANT

SIKAHYFLEX-140
SIKAHYFLEX-160
SIKAHYFLEX-250 FACADE
SIKASIL WS-305
SIKAHYFLEX-105
SIKAHYFLEX 100
SIKAHYFLEX CONNECTION
SIKAHYFLEX-220 WINDOW



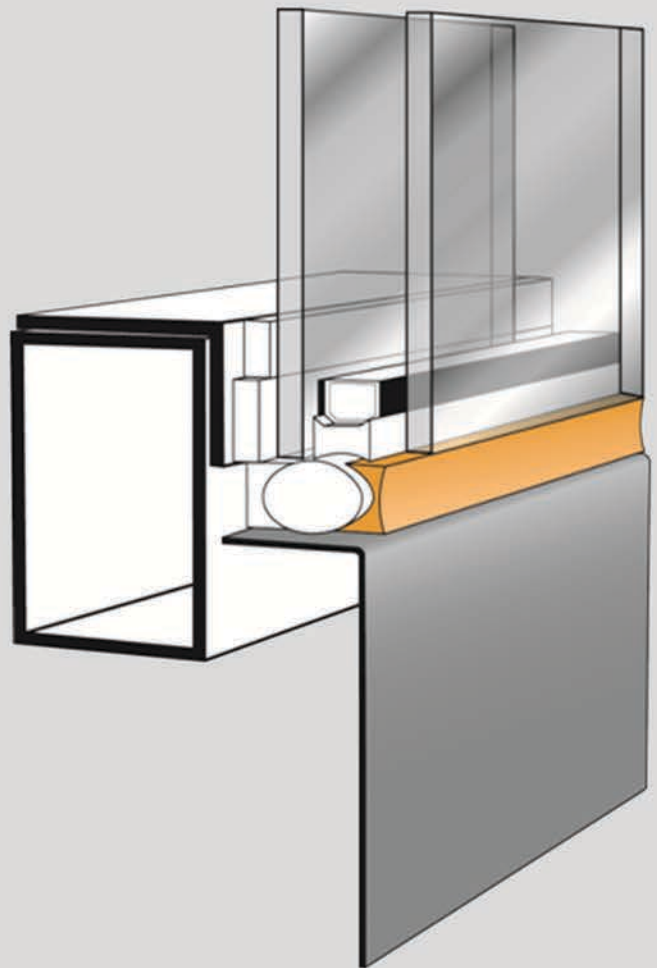
UNIVERSAL BONDING

AUTHORIZED
DISTRIBUTOR

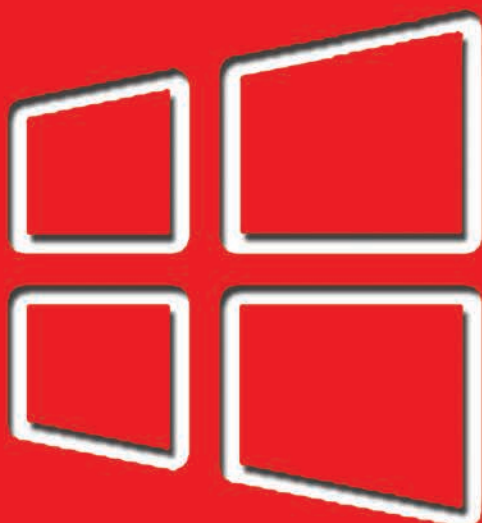
Sika®



Versatile, can be
used as a sealant



Sika MaxTack®
HIGH STRENGTH GRAB ADHESIVE



SIKA FIRE RATED PRODUCT

SIKASIL-670 Fire
SIKASIL-665 SL

SIKA UNIVERSAL BONDING

SIKA MAX TACK ULTRA
SIKAFLEX 11-FC

SIKA FACADE SEALANT

SIKAHYFLEX-140
SIKAHYFLEX-160
SIKAHYFLEX-250 FACADE
SIKASIL WS-305
SIKAHYFLEX-105
SIKAHYFLEX 100
SIKAHYFLEX CONNECTION
SIKAHYFLEX-220 WINDOW



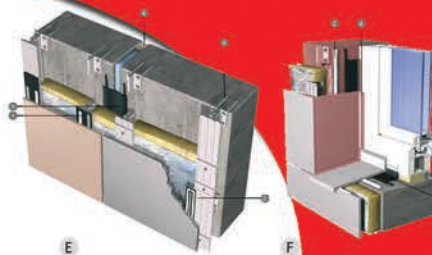
FACADE SEALANT

**AUTHORIZED
DISTRIBUTOR**

Sika®



Ventilated Facades



Panel Bonding

The SikaBond® Panel System consists of an adhesive and a priming tape and can be used in two different ways:

- On-site bonding (dry): An aluminum profile (substructure) is anchored to the concrete wall. The panel is glued to the profile. A double-sided adhesive tape holds the panel during the full re-anchoring of the glue.
- Factory pre-anchored profile: An aluminum profile is glued to the panel back side in the factory. The fixing nail is anchored to the wall and is brought into line. The fasteners are adjusted to hold the panel at the fixing profile on the back.

Both techniques provide a proven design freedom.

- ① SikaBond® Panel System (on-site bonding)
- ② SikaBond® Panel System (factory pre-anchored)
- ③ SikaAnchor®

Structural Window Bonding

Window bonding is an innovative technology where the glass is directly bonded to the wall. This system allows the glass and allows weight reduction of conventional and minimizing the wall weight. All loads are directly transferred to the wall by replacing the window frame by an adhesive applied on all four sides. This minimizes the risk of glass breakage.

- ① SikaBond® WT Silastic® Adhesives
- ② SikaBond® PU Systems
- ③ SikaBond® Acrylic Adhesives

General Bonding

Sika has developed a wide product range for many bonding applications.

- ① SikaBond® PU and PU-Hybrid Systems
- ② SikaAnchor®

Water/Vapour Proofing (in detail E and F)

Depending on the climatic conditions both wet and wet-dry Sika® PU or Sika® Silastic® or SikaBond® PU systems can be used for moisture/vapour proofing and perimeter sealing around the window frames. SikaBond® PU systems are high-quality systems with optimized water/vapour diffusion resistance levels.

- ① SikaBond® PU Systems
- ② SikaBond® PU-Hybrid Systems
- ③ SikaBond® PU Systems

Sika® Solutions at a Glance



Bonding Technologies

Structural Glazing and Insulating Glass Edge Bonding

SikaBond® PU and SikaBond® PU-Hybrid systems are used for structural glazing and insulating glass edge bonding.

- ① SikaBond® PU Systems
- ② SikaBond® PU-Hybrid Systems

Panel Bonding

SikaBond® PU and SikaBond® PU-Hybrid systems are used for panel bonding.

- ① SikaBond® PU Systems
- ② SikaBond® PU-Hybrid Systems

Panel Lamination

SikaBond® PU and SikaBond® PU-Hybrid systems are used for panel lamination.

- ① SikaBond® PU Systems
- ② SikaBond® PU-Hybrid Systems

Panel Reinforcement (Panel Strengthening)

SikaBond® PU and SikaBond® PU-Hybrid systems are used for panel reinforcement.

- ① SikaBond® PU Systems
- ② SikaBond® PU-Hybrid Systems

Water/Vapour Proofing

SikaBond® PU and SikaBond® PU-Hybrid systems are used for water/vapour proofing.

- ① SikaBond® PU Systems
- ② SikaBond® PU-Hybrid Systems

Sealing Technologies

Joint Sealing

SikaSeal® MS is the specialized low modulus silicone for glass, metal, substrate and plastic.

List-Group">

- ① SikaSeal® MS

Joint Sealing

SikaSeal® MS is the specialized low modulus silicone for glass, metal, substrate and plastic.

List-Group">

- ① SikaSeal® MS

Joint Sealing

SikaSeal® MS is the specialized low modulus silicone for glass, metal, substrate and plastic.

List-Group">

- ① SikaSeal® MS

Joint Sealing

SikaSeal® MS is the specialized low modulus silicone for glass, metal, substrate and plastic.

List-Group">

- ① SikaSeal® MS

Joint Sealing

SikaSeal® MS is the specialized low modulus silicone for glass, metal, substrate and plastic.

List-Group">

- ① SikaSeal® MS

Joint Sealing

SikaSeal® MS is the specialized low modulus silicone for glass, metal, substrate and plastic.

List-Group">

- ① SikaSeal® MS

Joint Sealing

SikaSeal® MS is the specialized low modulus silicone for glass, metal, substrate and plastic.

List-Group">

- ① SikaSeal® MS

Joint Sealing

SikaSeal® MS is the specialized low modulus silicone for glass, metal, substrate and plastic.

List-Group">

- ① SikaSeal® MS

Joint Sealing

SikaSeal® MS is the specialized low modulus silicone for glass, metal, substrate and plastic.

List-Group">

- ① SikaSeal® MS

Joint Sealing

SikaSeal® MS is the specialized low modulus silicone for glass, metal, substrate and plastic.

List-Group">

- ① SikaSeal® MS

Joint Sealing

SikaSeal® MS is the specialized low modulus silicone for glass, metal, substrate and plastic.

List-Group">

- ① SikaSeal® MS

Joint Sealing

SikaSeal® MS is the specialized low modulus silicone for glass, metal, substrate and plastic.

List-Group">

- ① SikaSeal® MS

Joint Sealing

SikaSeal® MS is the specialized low modulus silicone for glass, metal, substrate and plastic.

List-Group">

- ① SikaSeal® MS

Joint Sealing

SikaSeal® MS is the specialized low modulus silicone for glass, metal, substrate and plastic.

List-Group">

- ① SikaSeal® MS

Joint Sealing

SikaSeal® MS is the specialized low modulus silicone for glass, metal, substrate and plastic.

List-Group">

- ① SikaSeal® MS

Joint Sealing

SikaSeal® MS is the specialized low modulus silicone for glass, metal, substrate and plastic.

List-Group">

- ① SikaSeal® MS

Joint Sealing

SikaSeal® MS is the specialized low modulus silicone for glass, metal, substrate and plastic.

List-Group">

- ① SikaSeal® MS

Joint Sealing

SikaSeal® MS is the specialized low modulus silicone for glass, metal, substrate and plastic.

List-Group">

- ① SikaSeal® MS

Joint Sealing

SikaSeal® MS is the specialized low modulus silicone for glass, metal, substrate and plastic.

List-Group">

- ① SikaSeal® MS

Joint Sealing

SikaSeal® MS is the specialized low modulus silicone for glass, metal, substrate and plastic.

List-Group">

- ① SikaSeal® MS

Joint Sealing

SikaSeal® MS is the specialized low modulus silicone for glass, metal, substrate and plastic.

List-Group">

- ① SikaSeal® MS

Curtain Wall Facades



Structural Glazing

Sika structural glazing adhesive SikaBond® GS-10, GS-20, GS-30 and GS-500 CE have shown their excellent performance and weatherability in major projects around the globe.

- ① SikaBond® GS-10, SikaBond® GS-20
- ② SikaBond® GS-30, SikaBond® GS-500 CE

Insulating Glass

Sika offers a complete product range for IG edge sealing. Argon-filled IG units with the IG treated silicone edge seal SikaSeal® IG-25 MS.

Plus are suitable for structurally glazed facades. For air-filled IG units SikaSeal® IG-25 is also applicable. SikaSeal® IG-50 is mainly used in IG units for structurally bonded windows.

- ① SikaSeal® IG-25
- ② SikaSeal® IG-25 MS Plus
- ③ SikaSeal® IG-50 PU Secondary Seal
- ④ SikaSeal® IG-50 PU Primary Seal

Weathersealing

Structural glazing panels must have many sealsants and adhesives which come into contact with each other and with many other materials. They require high-quality products which are compatible with all materials and weathering agents.

Therefore Sika will only involve the weathersealing and adhesive for glass glazing panels.

- ① SikaSeal® IG-25 MS
- ② SikaSeal® IG-50 PU
- ③ SikaSeal® IG-50 PU
- ④ SikaSeal® IG-50 PU

Non-staining Weathersealing

Natural stone such as granite, marble, sandstone etc. are relatively absorbing and very sensitive to staining, which makes them very sensitive to staining materials.

The use of the non-staining weathersealing SikaSeal® IG-25 MS for weathersealing of natural stone facades is a must. The compatibility of the sealant with the stone should be tested in case of Sika's facade.

Comprehensive weathersealing for glass and metal cladding with resistant dirt pick-up for clean facades.

SikaSeal® IG-25 MS is suitable for weathersealing.

List-Group">

- ① SikaSeal® IG-25
- ② SikaSeal® IG-25 MS
- ③ SikaSeal® IG-50 PU
- ④ SikaSeal® IG-50 PU

Fire-resistant Facades

Sika's fire-resistant weathersealing SikaSeal® IG-25 MS for curtain wall facades has been tested to BS-476, part 13 with a 1 hour fire resistance. The self-extinguishing property SikaSeal® IG-25 MS has been confirmed for fire-resistant applications. SikaSeal® IG-25 MS completes the product range for exterior application.

List-Group">

- ① SikaSeal® IG-25 MS
- ② SikaSeal® IG-50 PU
- ③ SikaSeal® IG-50 PU
- ④ SikaSeal® IG-50 PU

Panel Reinforcing

Big panels become vulnerable in facades in order to save weight. The panels get thinner and thinner to achieve against falling. The panels are reinforced with a metal or plastic profile bonded to the back side.

List-Group">

- ① SikaBond® Acrylic Adhesives
- ② SikaBond® Epoxy Hybrid Adhesives
- ③ SikaBond® PU Adhesives

Panel Lamination

Sika supplies adhesives for the protection of sandwich panels combining many kinds of materials for thermal resistance in the structural sections.

List-Group">

- ① SikaBond® PU Systems
- ② SikaBond® PU-Hybrid Systems

Glass Wall Grouting

In total vision glazing (TVG), the glazing and glass balustrade the glass panels should be fixed to the frame (the structural frame) together to the glass. With Sika® Acrylic and SikaSeal® the bottom glass edge is embedded in the floor, and this results in uniform stress distribution. The PU embedding is protected against weathering by SikaSeal® MS silicone sealant.

List-Group">

- ① Sika® Acrylic AD PU Systems
- ② SikaSeal® PU Systems
- ③ SikaSeal® PU Systems

Glass-to-Glass Constructions

Sika offers various silicone sealants for glass-to-glass applications. SikaSeal® MS for sealing of monolithic glass and SikaSeal® IG-25 MS for sealing of laminated glass. High modulus SikaSeal® IG-50, IG-20 are used for high-strength glass-to-glass bonding.

List-Group">

- ① SikaSeal® IG-25 MS
- ② SikaSeal® IG-50
- ③ SikaSeal® IG-20

